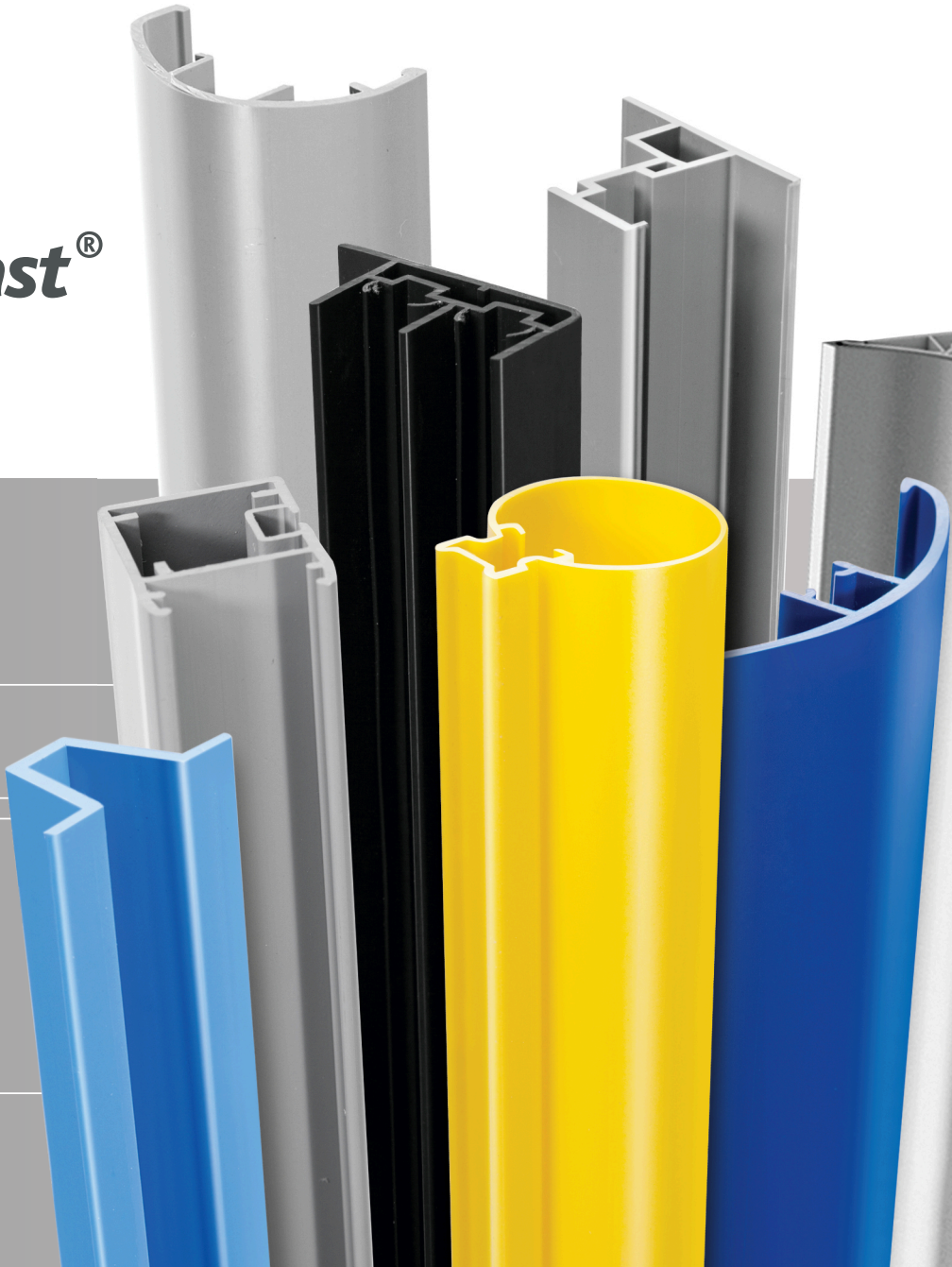




Thermoplast[®]

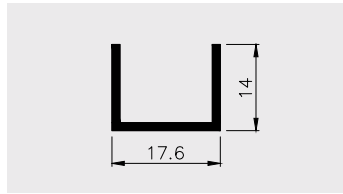
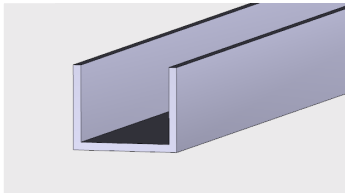


KATALOG PROFILI

DLA GASTRONOMII

z tworzyw sztucznych

AP 094



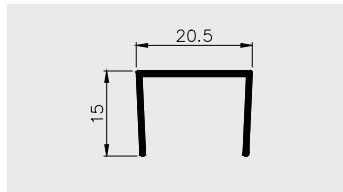
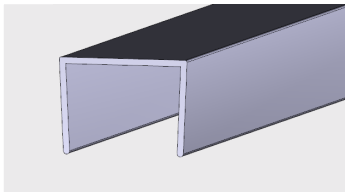
Nazwa profilu:

Profil U

Materiał:

PVC-U

AP 168



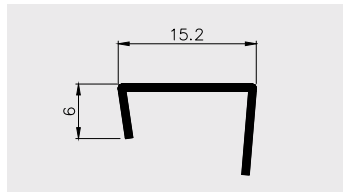
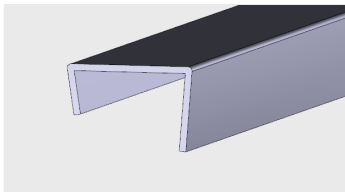
Nazwa profilu:

Profil U

Materiał:

PVC-U

AP 245



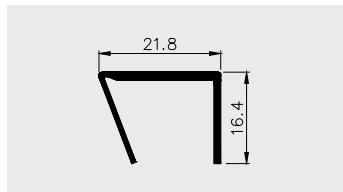
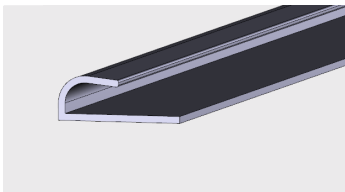
Nazwa profilu:

Profil U

Materiał:

PVC-U

AP 724



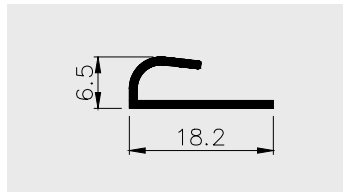
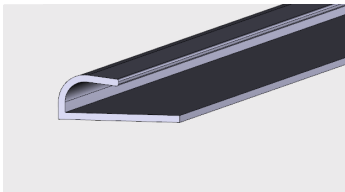
Nazwa profilu:

Profil U

Materiał:

PVC-U

AP 177



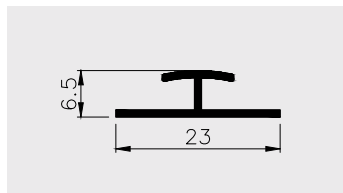
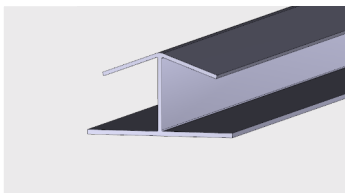
Nazwa profilu:

Profil J

Materiał:

PVC-U

AP 178



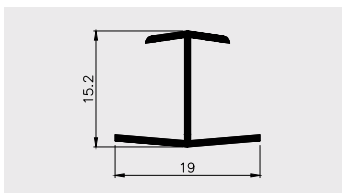
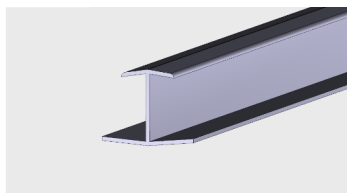
Nazwa profilu:

Profil H

Materiał:

PVC-U

AP 244



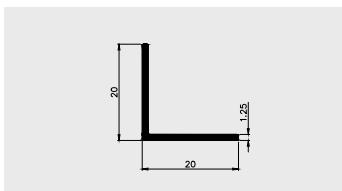
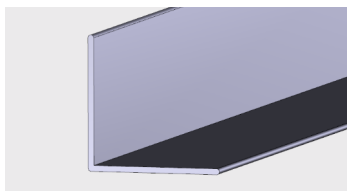
Nazwa profilu:

Profil H

Materiał:

PVC-U

AP 593



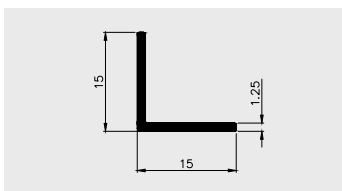
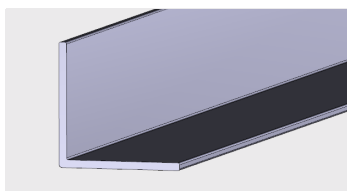
Nazwa profilu:

Profil kątowy 20 x 20 x 1.25

Materiał:

PVC-U

AP 594



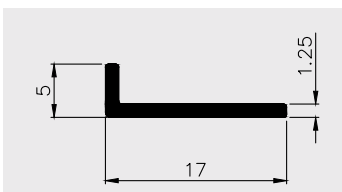
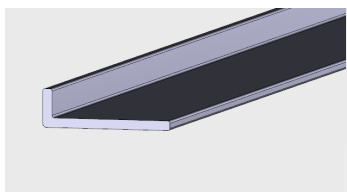
Nazwa profilu:

Profil kątowy 15 x 15 x 1.25

Materiał:

PVC-U

AP 595



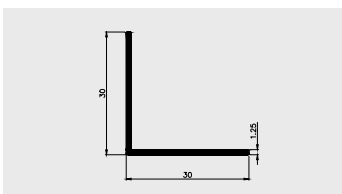
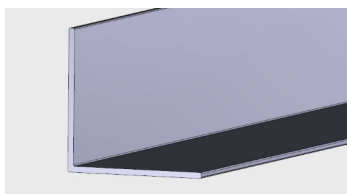
Nazwa profilu:

Profil kątowy 17 x 5 x 1.25

Materiał:

PVC-U

AP 596



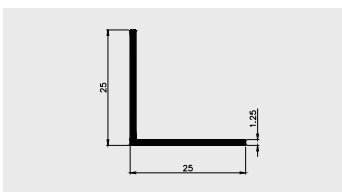
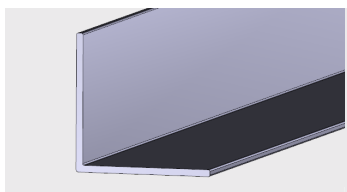
Nazwa profilu:

Profil kątowy 30 x 30 x 1.25

Materiał:

PVC-U

AP 597



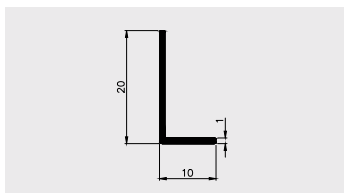
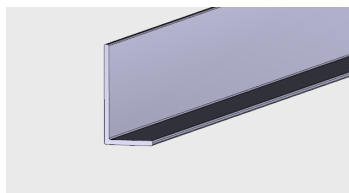
Nazwa profilu:

Profil kątowy 25 x 25 x 1.25

Materiał:

PVC-U

AP 598



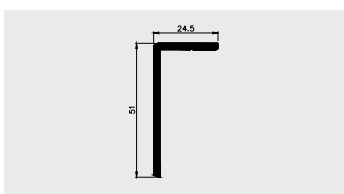
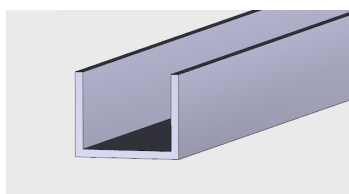
Nazwa profilu:

Profil kątowy 20 x 10 x 1

Materiał:

PVC-U

AP 713



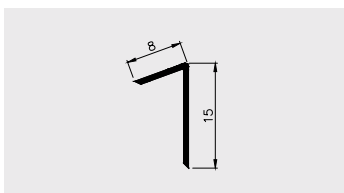
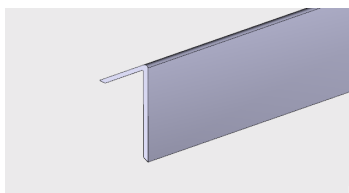
Nazwa profilu:

Profil listwy maskującej

Materiał:

PVC-U

AP 723



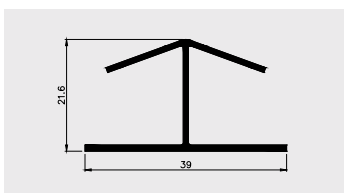
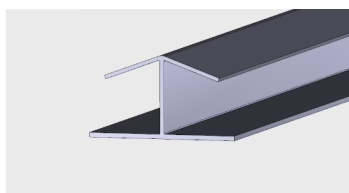
Nazwa profilu:

Profil ślizgowy „V”

Materiał:

PA

AP 725



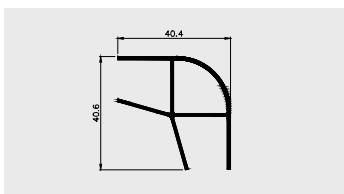
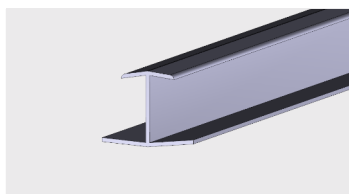
Nazwa profilu:

Profil H

Materiał:

PVC-U

AP 726



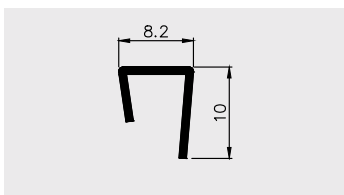
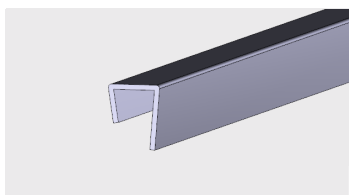
Nazwa profilu:

Profil H

Materiał:

PVC-U

AP 808

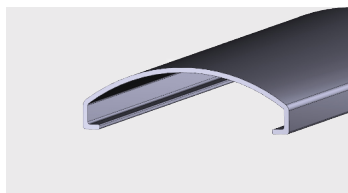


Nazwa profilu:

**Profil zakończeniowy do AP805
(profilu zakończeniowego pod zmywarę)**

Materiał:

AP 528



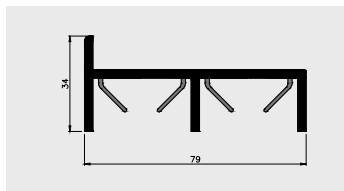
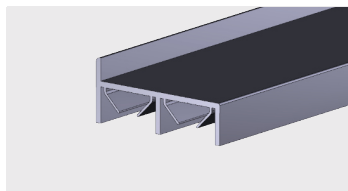
Nazwa profilu:

Profil osłony oświetleniowej

Materiał:

PVC-U

AP 209



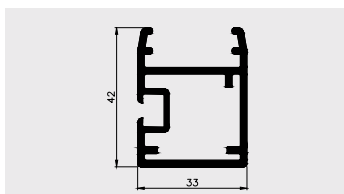
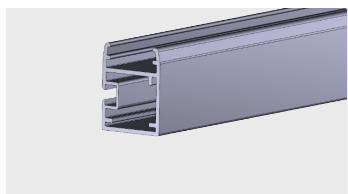
Nazwa profilu:

Profil prowadnicy drzwi przesuwnych urządzeń chłodniczych

Materiał:

PVC-P / PVC-U

AP 383



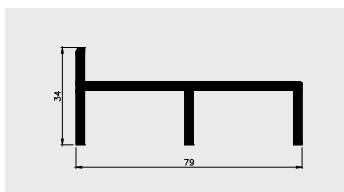
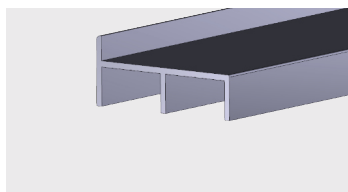
Nazwa profilu:

Profil skrzydła drzwi urządzeń chłodniczych oraz drzwi przesuwnych

Materiał:

PVC-U

AP 399



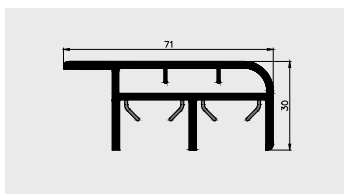
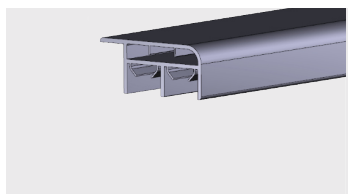
Nazwa profilu:

Profil prowadnicy drzwi przesuwnych urządzeń chłodniczych

Materiał:

PVC-U

AP 452



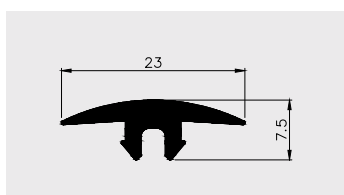
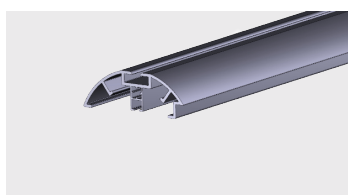
Nazwa profilu:

Profil prowadnicy drzwi przesuwnych urządzeń chłodniczych

Materiał:

PVC-P / PVC-U

AP 234



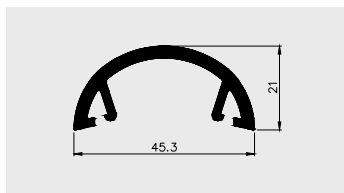
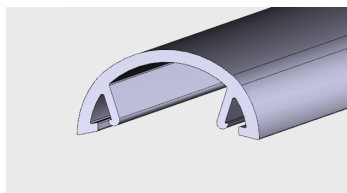
Nazwa profilu:

Profil dekoracyjny odbojnika

Materiał:

PVC-U

AP 287



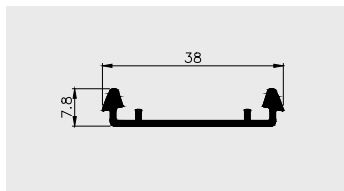
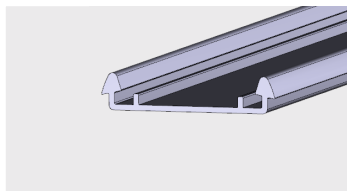
Nazwa profilu:

Profil odbojnika urządzeń chłodniczych

Materiał:

PVC-P

AP 288



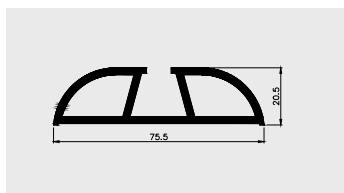
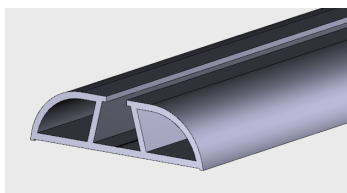
Nazwa profilu:

Profil montażowy do profilu odbojnika

Materiał:

PVC-U

AP 460



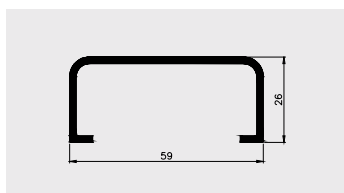
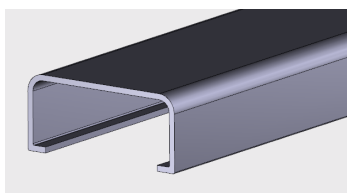
Nazwa profilu:

Profil odbojnika urządzeń chłodniczych

Materiał:

PVC-U

AP 464



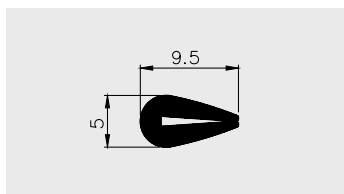
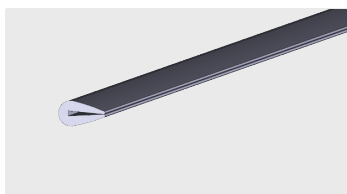
Nazwa profilu:

Profil odbojnika szafy chłodniczej

Materiał:

PVC-U

AP 216



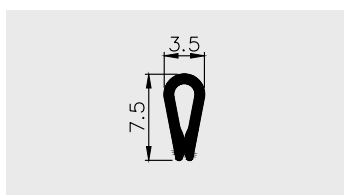
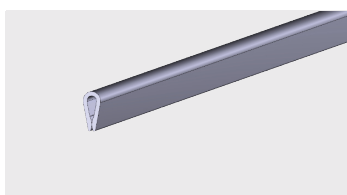
Nazwa profilu:

**Profil osłonowy blachy (1mm)
w urządzeniach chłodniczych**

Materiał:

PVC-U

AP 387



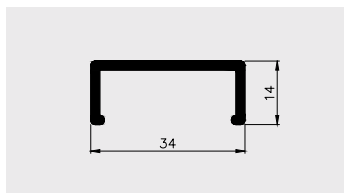
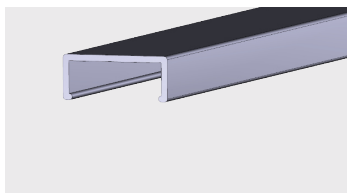
Nazwa profilu:

**Profil osłonowy blachy w urządzeniach
chłodniczych**

Materiał:

PVC-U

AP 542



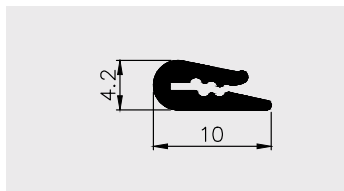
Nazwa profilu:

Profil osłony szyby

Materiał:

PVC-U

AP 544



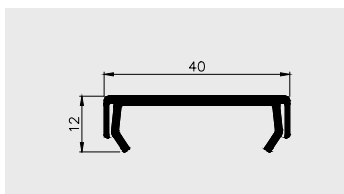
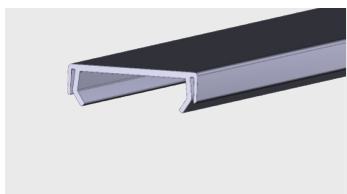
Nazwa profilu:

Profil osłony blachy

Materiał:

LSPE

AP 208



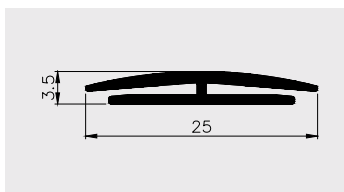
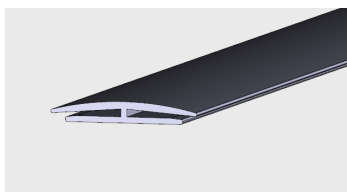
Nazwa profilu:

Profil łączący blachy w urządzeniach chłodniczych

Materiał:

PVC-U

AP 264



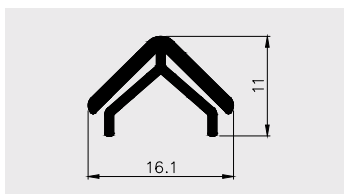
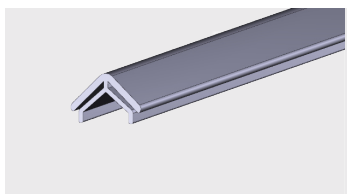
Nazwa profilu:

Profil łączący blachy w urządzeniach chłodniczych

Materiał:

PVC-U

AP 392



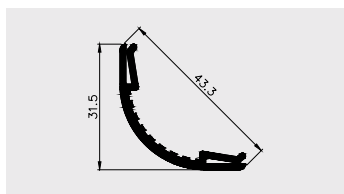
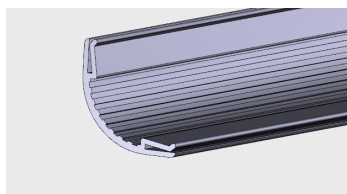
Nazwa profilu:

Profil łączący blachy w urządzeniach chłodniczych

Materiał:

PVC-U

AP 394



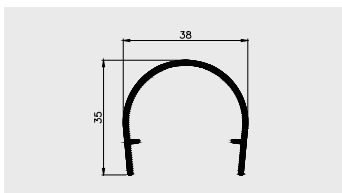
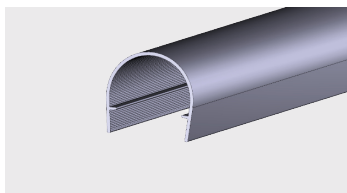
Nazwa profilu:

Profil łączący blachy w urządzeniach chłodniczych

Materiał:

PVC-U

AP 221



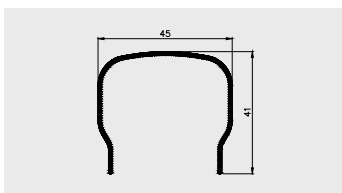
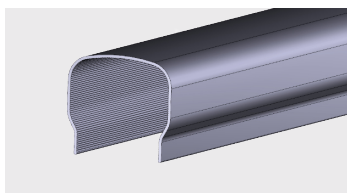
Nazwa profilu:

Profil osłony świetlówki

Materiał:

PMMA

AP 281



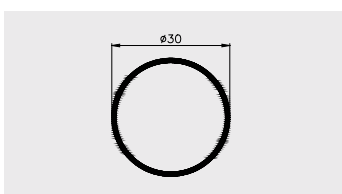
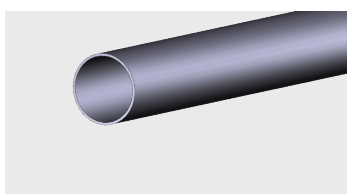
Nazwa profilu:

Profil osłony świetlówki

Materiał:

PVC-U TR

AP 404



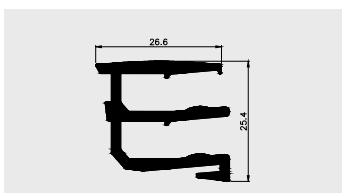
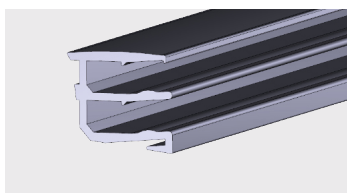
Nazwa profilu:

Profil osłony świetlówki

Materiał:

PC

AP 284



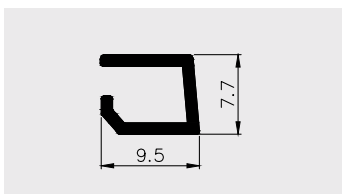
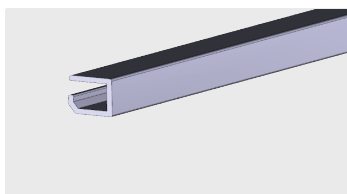
Nazwa profilu:

Profil prowadnicy szyb w urządzeniach chłodniczych

Materiał:

PVC-U

AP 285



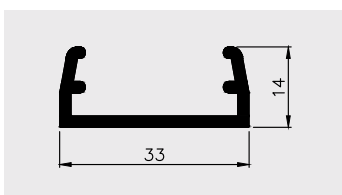
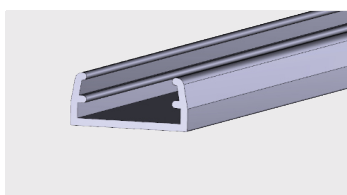
Nazwa profilu:

Profil wkładki prowadnicy szyb w urządzeniach chłodniczych

Materiał:

PVC-U

AP 575



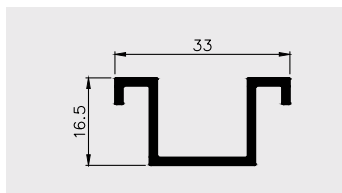
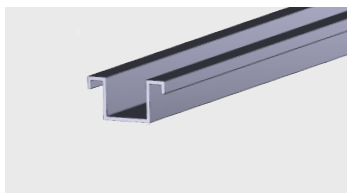
Nazwa profilu:

Profil montażowy do szyby zespolonej w urządzeniach chłodniczych

Materiał:

ABS

AP 773



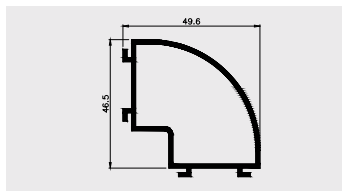
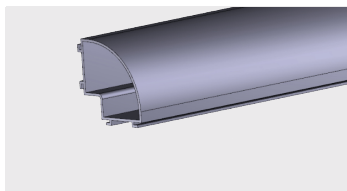
Nazwa profilu:

Profil szyby regału

Materiał:

PVC-U

AP 458



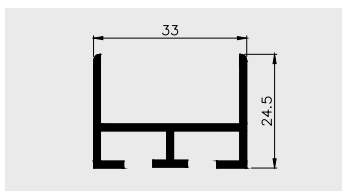
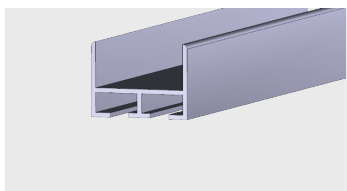
Nazwa profilu:

Profil narożny urządzeń chłodniczych

Materiał:

PVC-U

AP 459



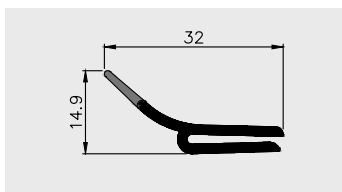
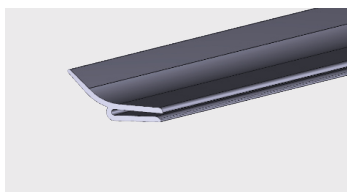
Nazwa profilu:

Profil montażowy profilu narożnego urządzeń chłodniczych

Materiał:

PVC-U

AP 577



Nazwa profilu:

Profil przypodłogowy urządzeń chłodniczych

Materiał:

PVC-U/PVC-P