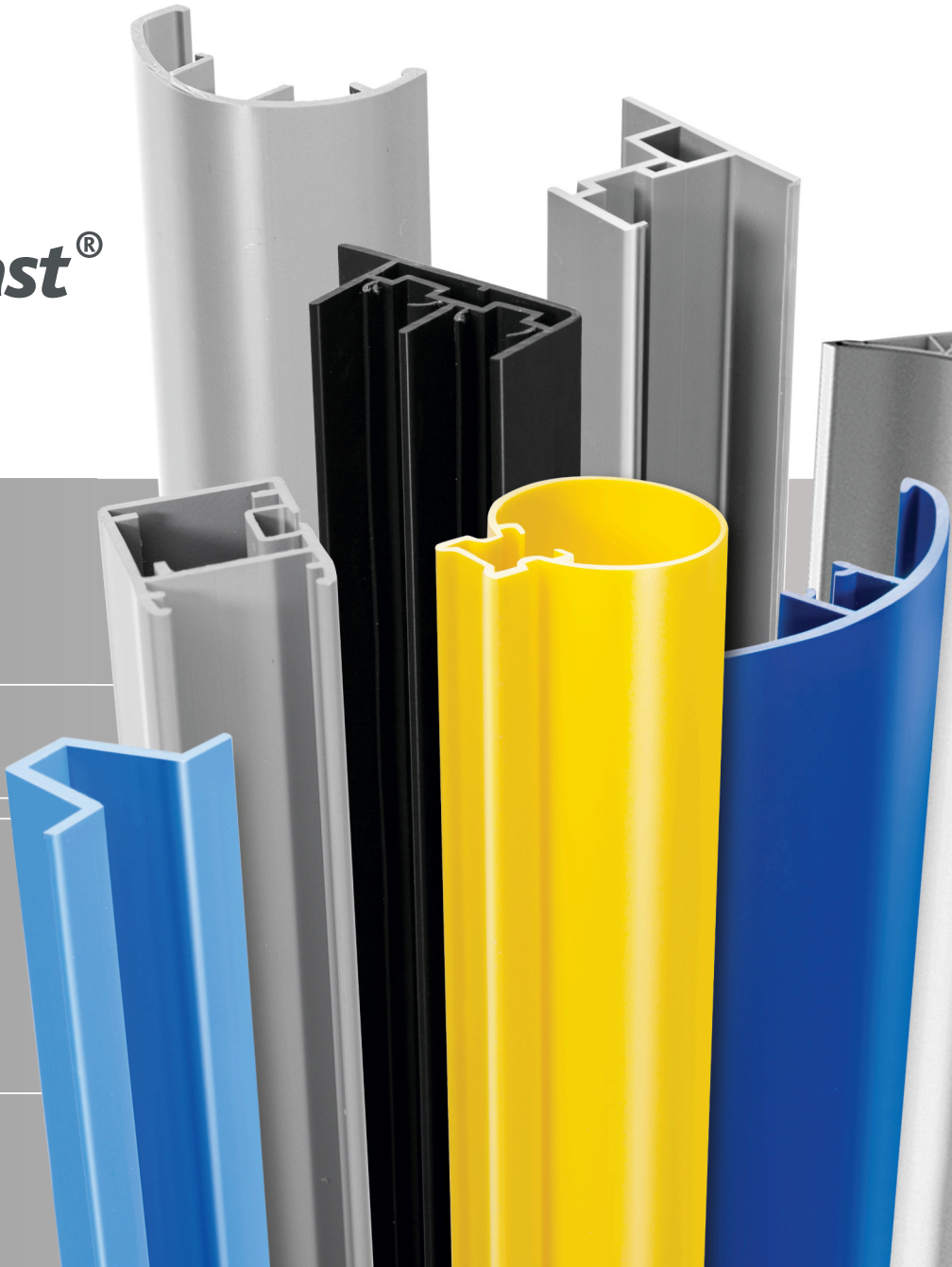
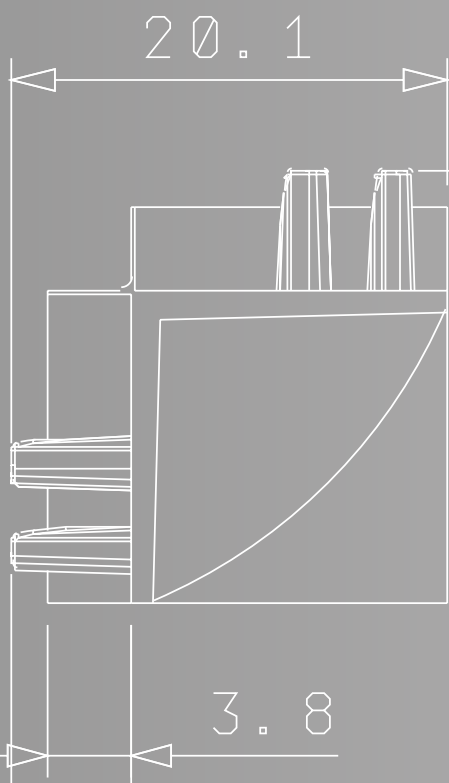




Thermoplast[®]



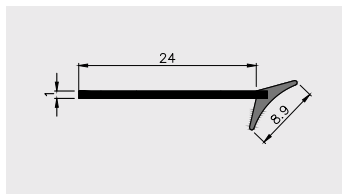
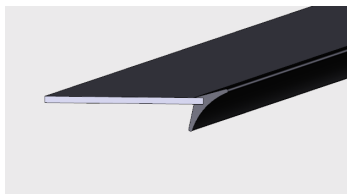
KATALOG PROFILI

BUDOWNICTWO

z tworzyw sztucznych

■ USZCZELKI

AP 632



Nazwa profilu:

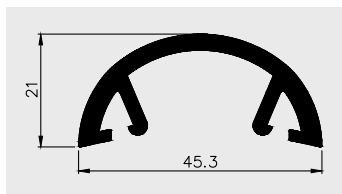
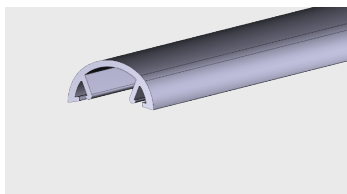
Uniwersalna uszczelka

Materiał:

PVC-U/PVC-P

■ ODBOJNIKI

AP 287

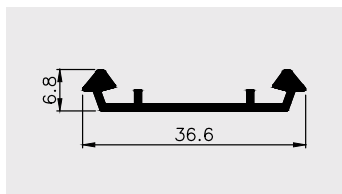
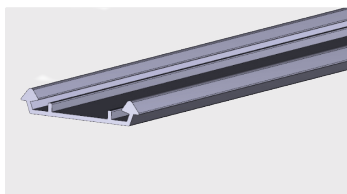


Nazwa profilu:

Profil odbojnika

Materiał:

AP 288



Nazwa profilu:

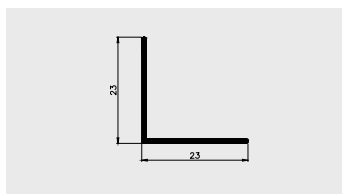
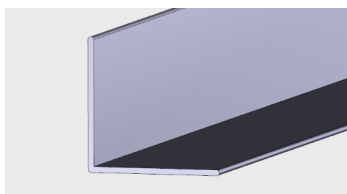
Profil montażowy do profilu odbojnika (komplet z AP287)

MATERIAŁ:

PVC-U

■ PROFILE KĄTOWE

AP 529



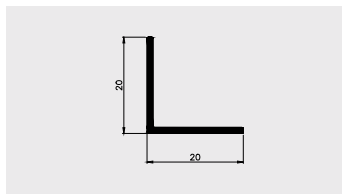
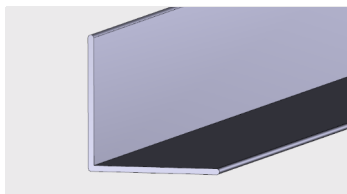
Nazwa profilu:

Profil kątowy 23 x 23

Materiał:

PVC-U

AP 593



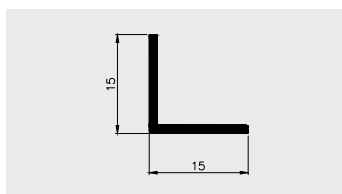
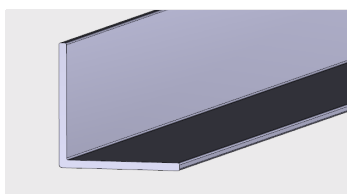
Nazwa profilu:

Profil kątowy 20 x 20

Materiał:

PVC-U

AP 594



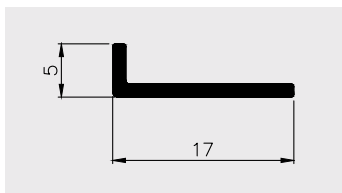
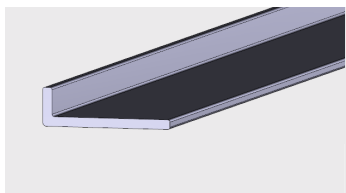
Nazwa profilu:

Profil kątowy 15 x 15

Materiał:

PVC-U

AP 595



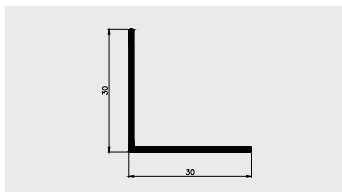
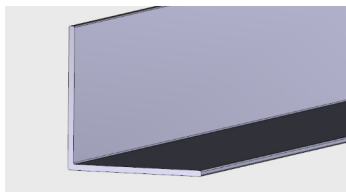
Nazwa profilu:

Profil kątowny 17 x 5

Materiał:

PVC-U

AP 596



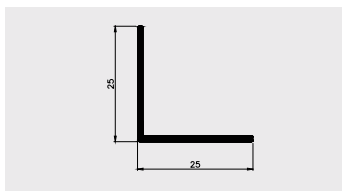
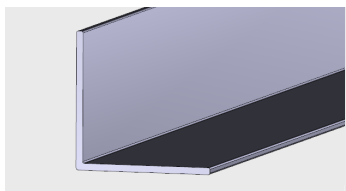
Nazwa profilu:

Profil kątowny 30 x 30

Materiał:

PVC-U

AP 597



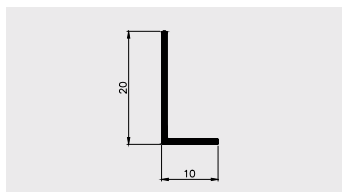
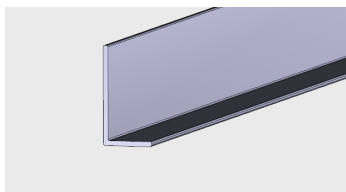
Nazwa profilu:

Profil kątowny 25 x 25

Materiał:

PVC-U

AP 598



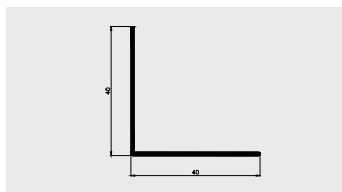
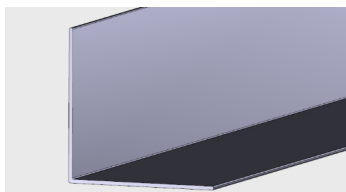
Nazwa profilu:

Profil kątowny 20 x 10

Materiał:

PVC-U

AP 599



Nazwa profilu:

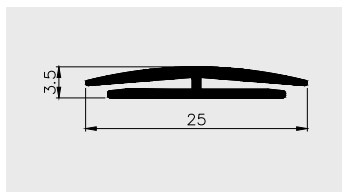
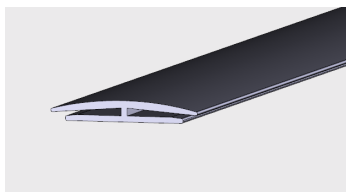
Profil kątowny 40 x 40

Materiał:

PVC-U

■ PROFILE OSŁONOWE I ŁĄCZENIOWE DO BLACH

AP 264



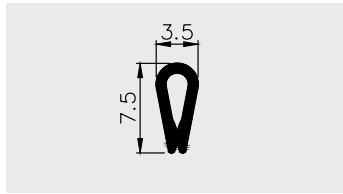
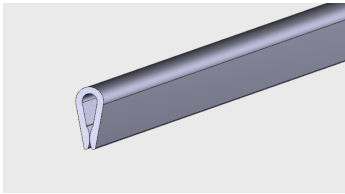
Nazwa profilu:

Profil łączący blachy

Materiał:

PVC-U

AP 387



Nazwa profilu:

Profil osłonowy blachy

Materiał:

PVC-U